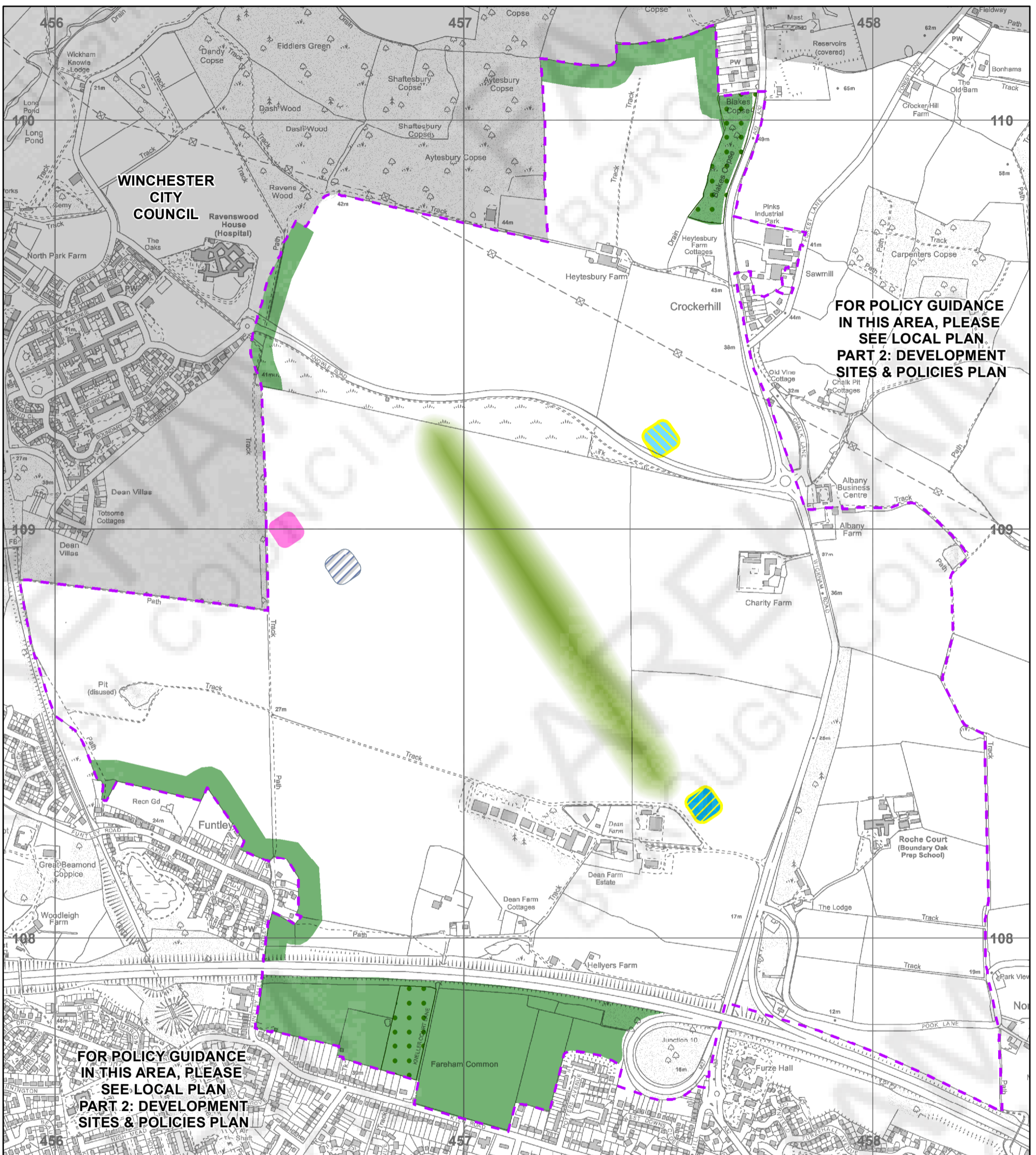










WELBORNE POLICIES MAP



**FOR POLICY GUIDANCE
IN THIS AREA, PLEASE
SEE LOCAL PLAN
PART 2: DEVELOPMENT
SITES & POLICIES PLAN**

**FOR POLICY GUIDANCE
IN THIS AREA, PLEASE
SEE LOCAL PLAN
PART 2: DEVELOPMENT
SITES & POLICIES PLAN**

Legend

-  WELBORNE BOUNDARY (WEL3)
-  SITES OF IMPORTANCE FOR NATURE CONSERVATION (CS4, DSP13)
-  SECONDARY SCHOOL APPROXIMATE LOCATION
-  WELBORNE SETTLEMENT BUFFERS
-  WELBORNE CENTRAL PARK APPROXIMATE LOCATION
-  LOCAL CENTRE APPROXIMATE LOCATION
-  DISTRICT CENTRE APPROXIMATE LOCATION
-  COMMUNITY HUB APPROXIMATE LOCATION

1:10,000



This map is reproduced from Ordnance Survey material with the permission of Ordnance Survey on behalf of the Controller of Her Majesty's Stationary Office © Crown Copyright. Unauthorised reproduction infringes Crown Copyright and may lead to prosecution or civil proceedings. Licence 100019110. 2014
Scale 1:10,000